



## IT'S SO EASY TO BE INDIVIDUAL!

Get unique designs with our CAD-CUT® patterns. Select a pattern of your choice from our catalog or create your own unique look. All we need is your design as a step and repeat file and you will receive your individual heat transfer vinyl.

CAD-CUT® Pattern is characterized by a soft, pleasant haptic. It is ideal for cutting small details and is very easy to weed.



## AVAILABLE IN

50 cm x 25 m roll

## RECOMMENDED FABRICS

- 100% cotton
- 100% polyester\*
- 100% nylon
- Polyester-cotton blends

\* Test before application!

## CUTTING NOTES

You should always test cut prior to any production run. Remember cutter settings will need to be adjusted as the blade ages.

For optimal cutting and weeding, maintain a line thickness of at least 1 mm for lettering and logos.

## APPLICATION INSTRUCTIONS

- Temperature: 150° C
- Time: 10-15 sec.
- Pressure: medium
- (#4-6 bei Hotronix®)
- Peel: warm/cold

## ACCESSORIES RECOMMENDED

- Grip Cover Sheet
- Cover Sheet - Non-Sticky
- EZ Weeder®, LED Weeder. LED Pin oder Tweezers

## CARE INSTRUCTIONS

Machine wash up to 60° C using mild detergent. Do not use bleach. Do not dry-clean. Do not iron directly onto CAD-CUT® Soft Metallic (use cover sheet).

## STORAGE

Store in cool, dry area. Avoid direct heat, sunlight and humidity.

## DETAILS

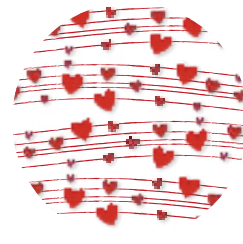


## KEY

Easy weed	Thin
Ironable	Sticky carrier
Ironable only inside out	Multi-color application
Washable	Peel hot
Sublimation	Application
Stretchable	Pressure
Flock	



color swirl



musical heart



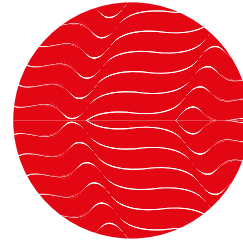
rainbow lines



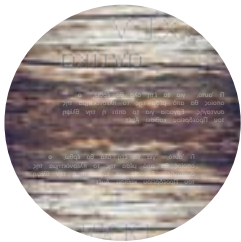
mosaic colors



eye of the peacock



red lines



natural wood



colorful honeycomb



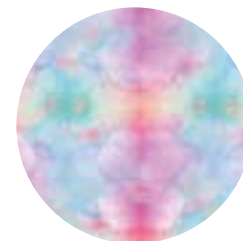
hexagon



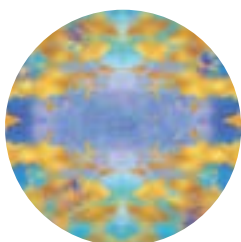
symbolic signs



energy



bubbles



bluegold



inks